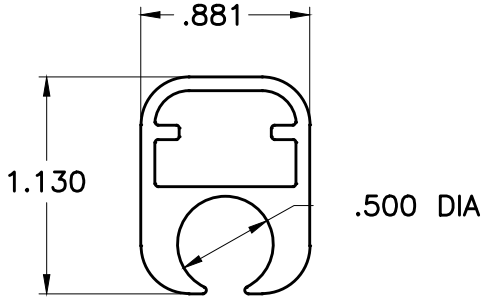


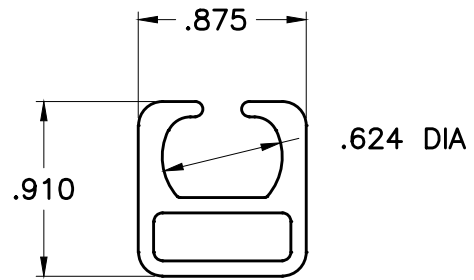
6153



.88 x 1.13 x .073w SLING B1

WT/FT: .490

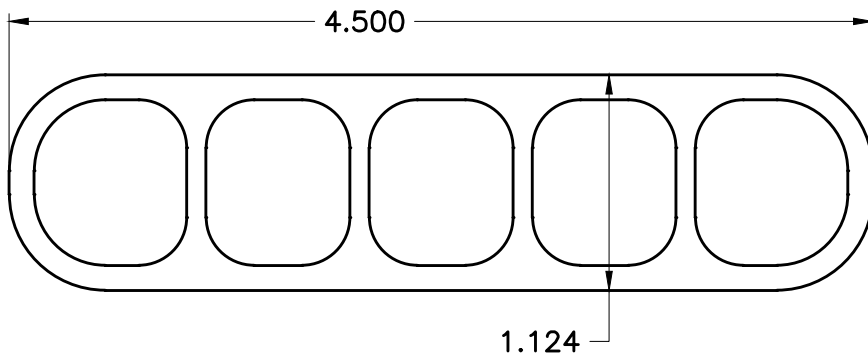
6347



.875 x .91 SLING RAIL

WT/FT: .419

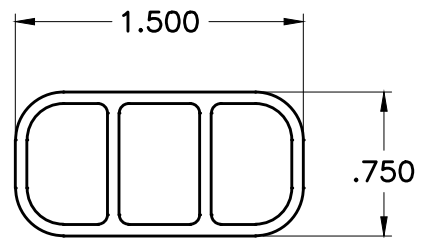
6350



2.25 x .562
 FIVE VOID HOLLOW TUBE

WT/FT: .557

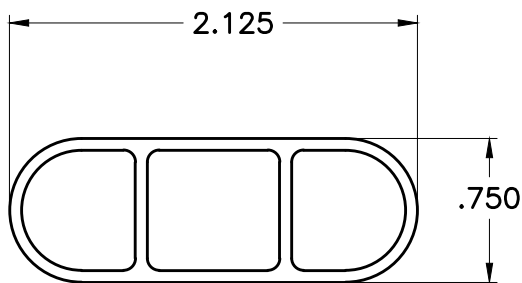
8893



1 1/2" X 3/4" FURNITURE ARM

WT/FT: .376

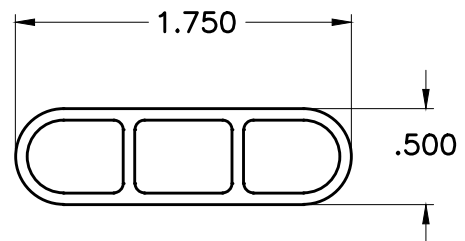
8969



2.125 X .75 X .062W
 tripple hollow furniture arm

WT/FT: .467

8894



1.75 x .5" TRIPPLE HOLLOW ARM

WT/FT: .340