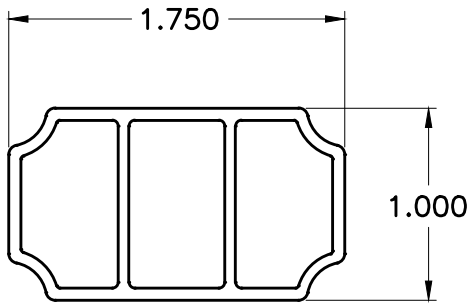


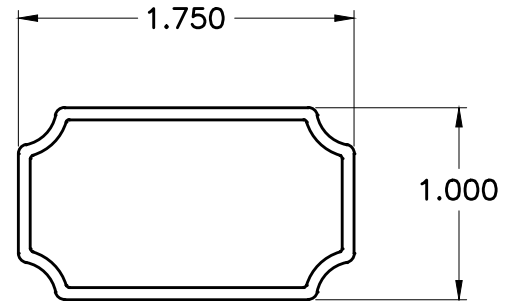
9083



1.75 x 1.0 x .063w
trippel hollow

WT/FT: .480

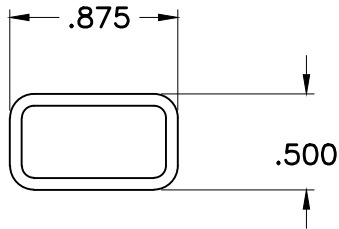
6348



1.75 x 1.0
HOLLOW TUBE

WT/FT: .365

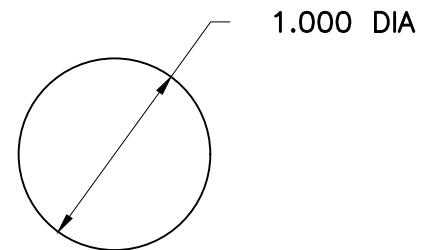
8204



.875 x .5 X .062W TUBE

WT/FT: .174

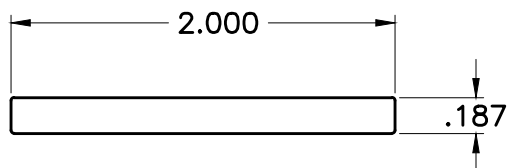
8093



1" Ø BAR

WT/FT: .942

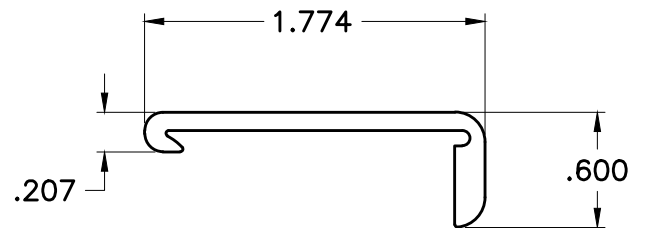
8736



2 X 3/16 FLAT BAR

WT/FT: .449

8895



1.77 x .60
FURNITURE END

WT/FT: .295